

Modular Positioner Systems

Welding Positioner PRO 4 PN

With 120 mm hollow shaft

Features

- Tilting and clamping from 0° to 90°.
- Start/stop via location-independent foot switch.
- Rotating direction adjustable: cw/ccw.
- Rotating time adjustable.
- 120 mm hollow shaft.
- Table diameter: 400 mm.
- Table speed adjustable from 0,2 – 2 rpm.
- Welding machine can be actuated via turntable control.
- Mass contact transmits 300A/100%.
- Turntable and control unit are separated.
- HF-protected.
- Welding positioner PRO 4 PN suitable for 3D welding tables.



Model	PRO 4 PN	PRO 4 SN
Supply voltage	AC 230 V/50 Hz	
Ground connection	300 A/100 %	
Tilting range	0° – 90°	
Table diameter	400 mm	
Hollow shaft	120 mm	
Mounting hole circle Ø	180 mm up to max. 360 mm	
Slot width turntable	17mm	
Speed	0,2 – 2 rpm	0,01 - 7,0 rpm
Torque	19,6 Nm	
Rotating directions	cw / ccw	
Max. load horizontal	400 kg	
HF-Protection	92 %	
Measur. (L x W x H) mm	480 x 400 x 425	
Weight	100 kg	
Item no.	02.30.01.10142	02.31.01.10200



COM-1000: easy control start/stop, cw/ccw
 COM-1802: easy control start/stop, cw/ccw
 COM-1803S: easy control start/stop, cw/ccw and with Speeddisplay
 COM-1800 VSF: with potentiometric foot switch
 COM-2800: with overlap welding, pneumatic control for automated welding
 COM-2803S: with overlap welding, pneumatic control and with Speeddisplay
 COM-3800: with overlap welding / Spot welding and tack welding
 COM-1803 ROB: with Robotic interface

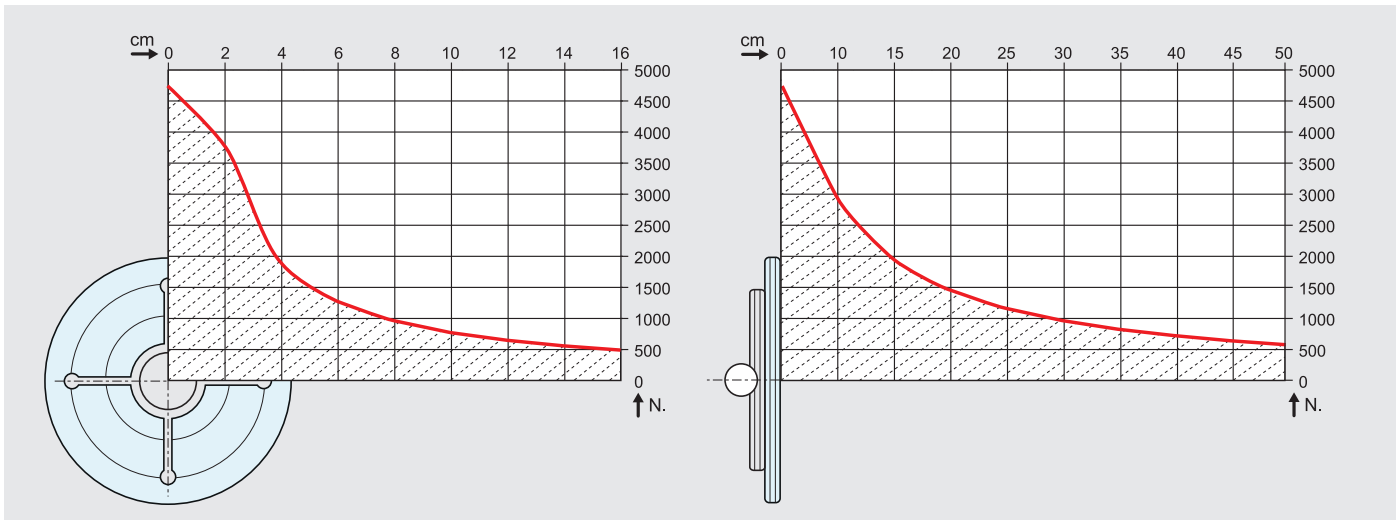
Modular Positioner Systems

Welding Positioner PRO 4 PN

Perfectly positioned

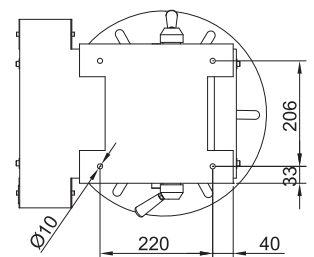
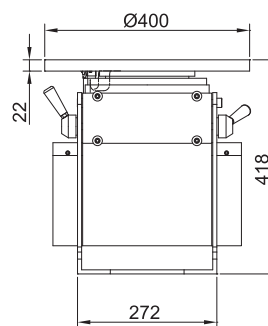
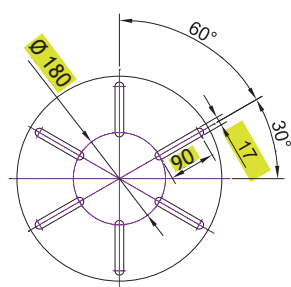
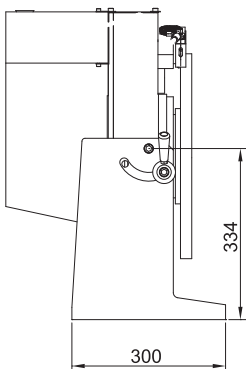
When choosing a turntable, the turning and tilting moment must be considered by all means. The distance between the center of gravity of the workpiece and the faceplate must be considered and the eccentric distance of the center of gravity and the center respectively. Don't forget

the weight of the clamping device. It is often higher than the weight of the workpiece itself. The workpieces can be positioned optimally for welding with a turning and tilting table. This improves productivity and quality significantly.



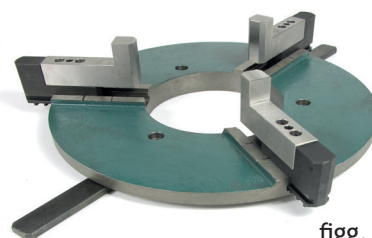
When choosing your positioner, please consider

- the center of gravity of your workpiece
- the weight of your tensioning device (chuck)



Note

suitable three-jaw chuck for PRO4 Chuck 400 JW, Chuck 200 D and Chuck 325 D



figg. Chuck 400JW