

Plasma Cutting Torches

PT-60 Plasma Cutting Torches

Suitable for AVALON 40 and 60

Typ	PT-60 with coaxial cable	Cutting torch components PT-60	Item no. old	Item no. new
Plasma cutting torch	hand torch, 6 m hose with rubber cover	1 Hand torch head 70°	19460100	02.13.05.00101
Current range	10 - 60 A	1a O-ring	19460104	02.13.05.00104
Duty cycle 80%	60 A	2 Handle with switch	19460020	02.13.05.00107
Gas	Air/N2	2a Switch	19460066	02.13.05.00110
Gas pressure	4,4 - 5,0 bar	3 Plasma electrode, back striking	19460116	02.13.05.00113
Gasflow	150 lpm	4 Diffusor	19460120	02.13.05.00116
Ignition	without HF*	5 Plasma nozzle, contact cutting, DM 0,65 (10-20A), Back Striking	19460124	02.13.05.00119
Item no. old	19460002	5 Plasma nozzle, contact cutting, DM 0,8 (20-30A), Back Striking	19460128	02.13.05.00122
Item new	02.12.04.00106	6 Plasma nozzle, contact cutting, DM 0,9 (30-40A), Back Striking	19460132	02.13.05.00128
		7 flat Plasma nozzle, DM 1,0 (40-50A), Back Striking	19460136	02.13.05.00131
		7 flat Plasma nozzle, DM 1,1 (50-60A), Back Striking	19460140	02.13.05.00134
		8 long Plasma electrode, back striking	19460144	02.13.05.00137
		9 long Plasma nozzle, contact cutting, DM 0,65 (10-20A), Back Striking	19460148	02.13.05.00140
		9 long Plasma nozzle, contact cutting, DM 0,8 (20-30A), Back Striking	19460152	02.13.05.00143
		10 long , Plasma nozzle contact cutting, DM 0,9 (30-40A), Back Striking	19460156	02.13.05.00146
		11 Protective cap, 6 drillings, grey	19460160	02.13.05.00149
		11 Protective cap, 6 drillings, max. livetime	19460164	02.13.05.00152
		12 Spacer with 2 tips	19460168	02.13.05.00155
		13 Contact nozzle, DM 0,9 (30-40A), Back Striking	19460133	02.13.05.00162
		Contact nozzle, DM 1,0 (40-50A), Back Striking	19460137	02.13.05.00165
		Contact nozzle DM 1,1 (50-60A), Back Striking	19460138	02.13.05.00168
		14 Protective cap head for contact cutting	19460165	02.13.05.00171
		15 Protective cap head for contact cutting.	19460166	02.13.05.00174
		16 Long protective nozzle DM 0,9 (40A) Back Striking	19460154	02.13.05.00177
		Long protective nozzle DM 1,0 (50A) Back Striking	19460158	02.13.05.00180
		Long protective nozzle 1,1 (60A) Back Striking	19460159	02.13.05.00183
		17 Protective cap	19460161	02.13.05.00186
		18 long protective cap (40-60A)	19460162	02.13.05.00189
		Key for electrode	19461156	02.13.05.00243

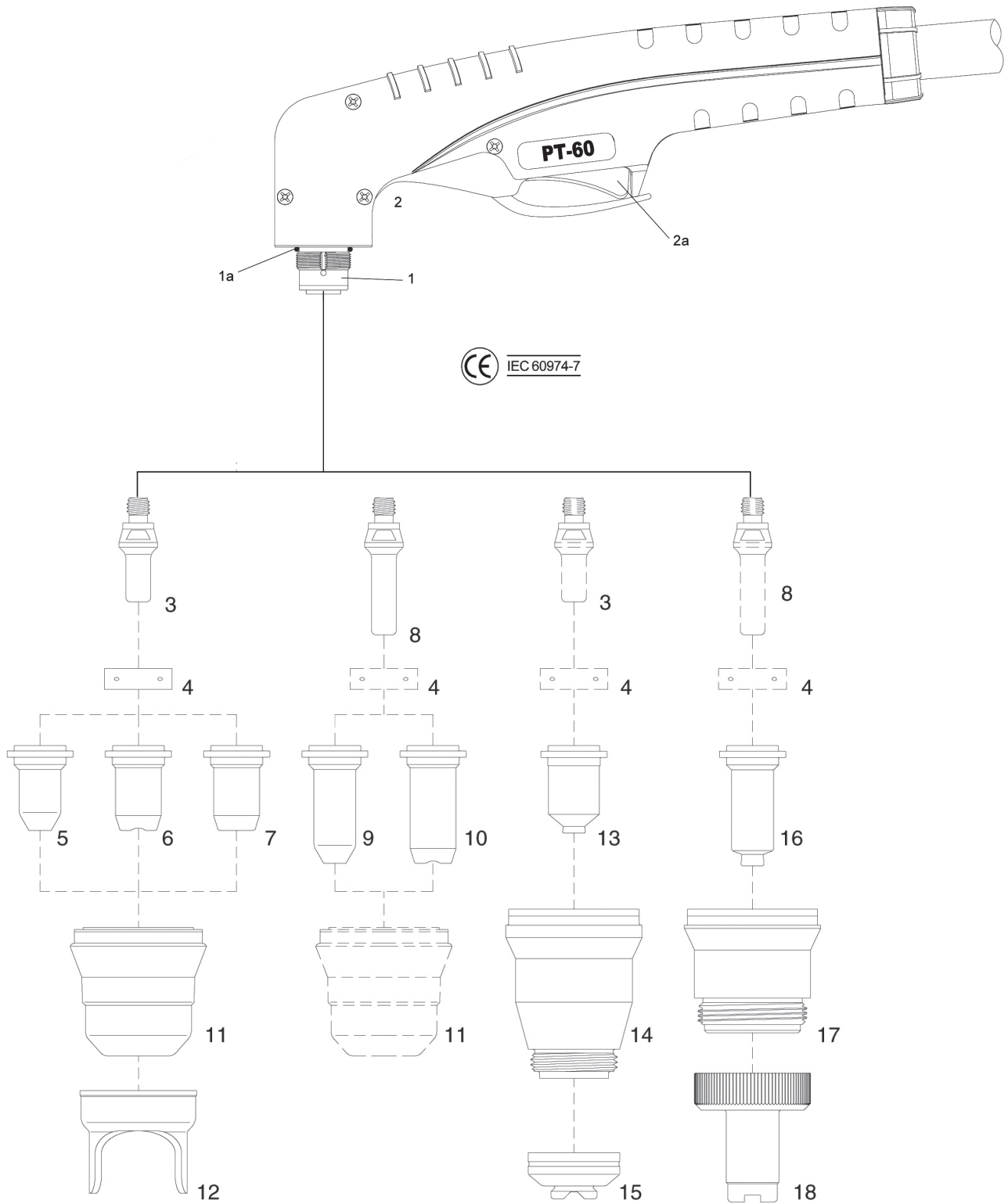
*Patented ignition system without contact of the workpiece.

Accessories	Item no. old	Item no. new
Circle cutting attachment	19460180	02.13.05.00192
Cutting guide	19460182	02.13.05.00195

Plasma Cutting Torches

PT-60 Plasma Cutting Torches

Suitable for AVALON 40 and 60



Plasma Cutting Torches

PTM-60 Plasma Cutting Torches

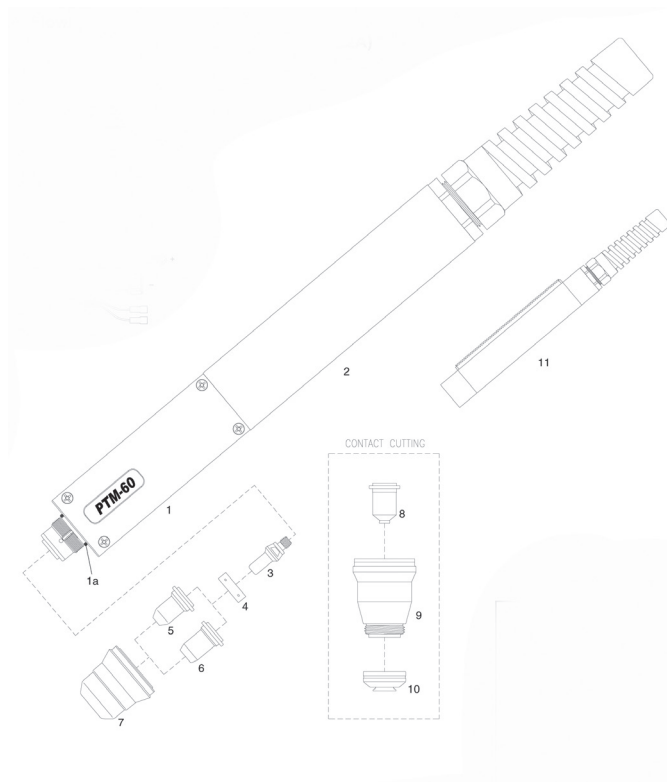
Suitable for Avalon 40 and 60

Typ	PTM-60 with coaxial cable
Plasma cutting torch	Torch 70°, 6 m hose with rubber cover
Current range	10 - 60 A
Duty cycle 80%	60 A
Gas	Luft/N2
Gas pressure	4,4 - 5,0 bar
Gasflow	150 lpm
Ignition	without HF*
Item no. old	19460004
Item new	02.12.04.00116

*Patented ignition system without contact of the workpiece.

Accessories	Item no. old	Item no. new
Circle cutting attachment	19460180	02.13.05.00192
Cutting guide	19460182	02.13.05.00158

Cutting torch components PTM-60	Item no. old	Item no. new
1 Hand torch head	19460100	02.13.05.00101
1a O-Ring	19460104	02.13.05.00104
2 Fibreglas Positions-Pipe	19460110	
3 Plasma electrode, back striking	19460116	02.13.05.00113
4 Diffusor	19460120	02.13.05.00116
5 Plasma nozzle, contact cutting, DM 0,65 (10-20A), Back Striking	19460124	02.13.05.00119
5 Plasma nozzle, contact cutting, DM 0,8 (20-30A), Back Striking	19460128	02.13.05.00122
5 Plasma nozzle, contact cutting, DM 0,9 (30-40A), Back Striking	19460132	02.13.05.00128
6 flat Plasma nozzle, DM 1,0 (40-50A), Back Striking	19460136	02.13.05.00131
6 flat Plasma nozzle, DM 1,1 (50-60A), Back Striking	19460140	02.13.05.00134
7 Protective cap, 6 drillings	19460163	
7 Protective cap, 6 drillings, max. lifetime	19460164	02.13.05.00152
8 Contact nozzle, DM 0,9 (30-40A), Back Striking	19460133	02.13.05.00162
Contact nozzle, DM 1,0 (40-50A), Back Striking	19460137	02.13.05.00165
Contact nozzle DM 1,1 (50-60A), Back Striking	19460159	02.13.05.00183
9 Protective cap	19460161	02.13.05.00186
10 Protective cap for machine	19460165	02.13.05.00171
11 Fibreglas Positions-Pipe with thread	19460114	
Key for electrodes	19460172	02.13.05.00158



Plasma Cutting Torches

PT-100 Plasma Cutting Torches

with coaxial cable suitable for AVALON 120

Features

- The special coaxial cable of this torch is extremely robust against slag and heat.

Typ	PT-100 with coaxial cable
Plasma cutting torch	hand torch 70°, 6 m hose with rubber cover
Current range	30 - 100 A
Duty cycle 60%	100 A
Gas	Air/N ₂
Gas pressure	4,6 - 5,0 bar
Gasflow	200 lpm
Ignition	without HF*
Item no. old	19462000
Item no. new	02.12.04.00306

*Patented ignition system without contact of the workpiece.

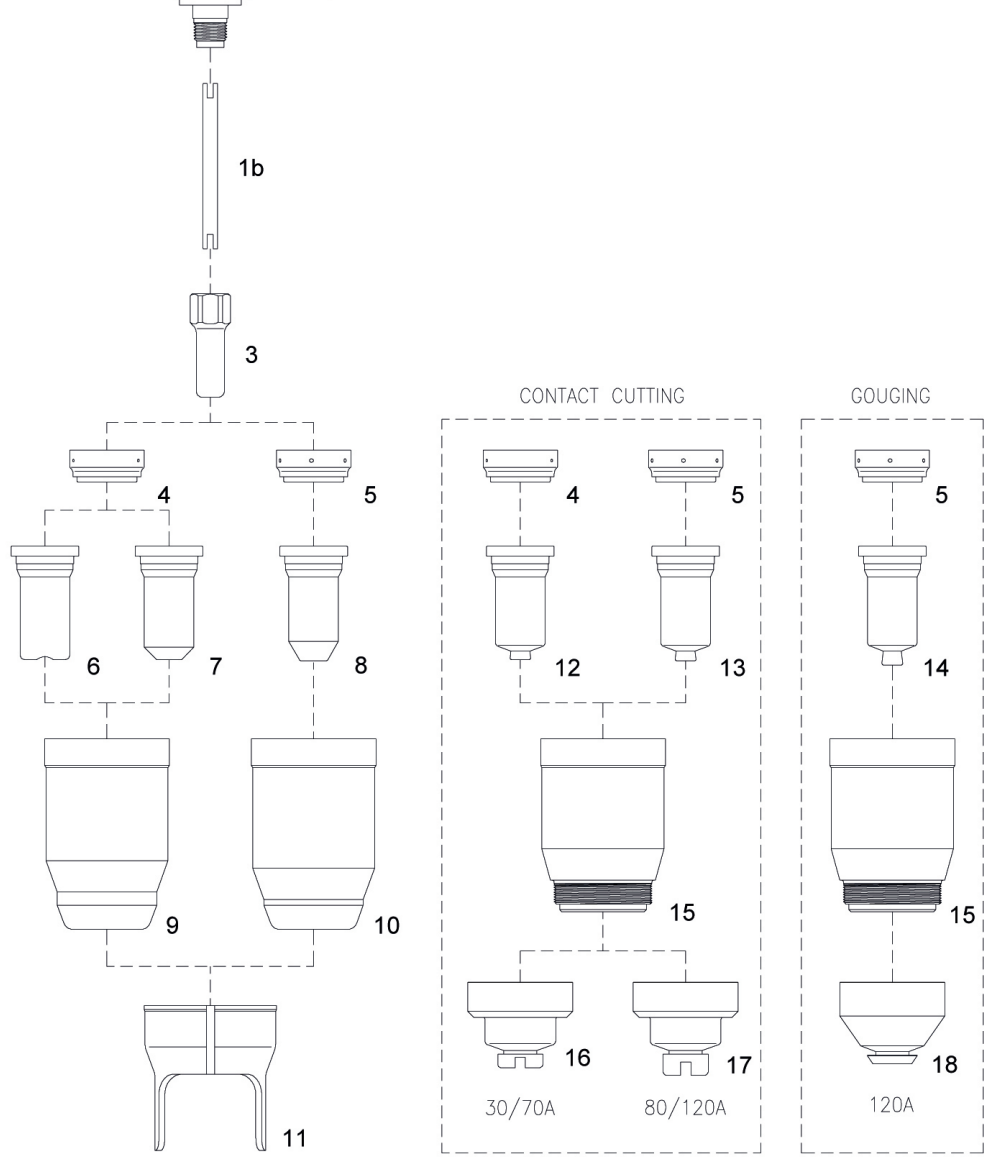
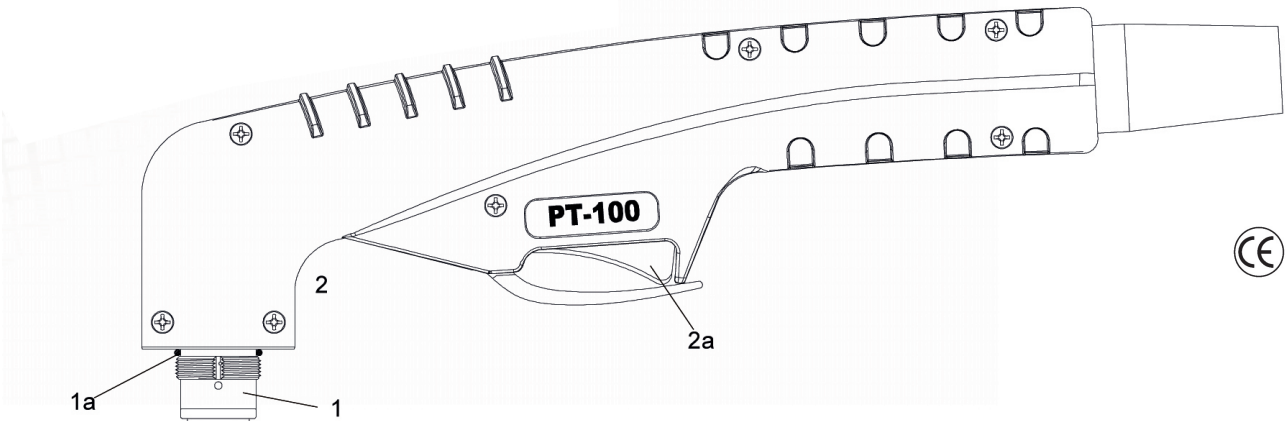
Accessories	Item no. old	Item no. new
Circle cutting attachment	19461192	02.13.05.00192
Cutting guide	19461196	02.13.05.00274

Cutting torch components PT-100	Item no. old	Item no. new
1 Hand torch head 70°	19462100	
1a O-ring	19462104	
1b Cooling tube	19462108	02.13.05.00305
2 Handle with switch	19461106	02.13.05.00307
2a Switch	19462112	02.13.05.00309
3 Plasma elektrode, Back Striking	19462120	02.13.05.00311
4 Diffusor 30 - 70 A	19462127	02.13.05.00313
5 Diffusor 80 - 120 A and gouging	19462128	02.13.05.00315
6 Plasma nozzle, contact cut, DM 0,9 (30 - 40A), Back Striking	19462194	02.13.05.00317
7 Plasma nozzle, cut, D 1,0 (40 - 50A), Back Striking	19462151	02.13.05.00319
7 Plasma nozzle, cut,, D 1,1 (50 - 60A), Back Striking	19462152	02.13.05.00321
7 Plasma nozzle, cut, D 1,2 (60 - 70A), Back Striking	19462153	02.13.05.00323
8 Plasma nozzle, cut, D 1,5 (100 - 110A), Back Striking	19462154	02.13.05.00325
8 Plasma nozzle, cut, D 1,6 (110 - 120A), Back Striking	19462155	02.13.03.00327
9 Protective cap, 30 - 70A	19462163	02.13.05.00329
10 Protective cap, 80 - 120A	19462164	2.13.05.00331
11 Spacer with 2 tips (only for 7 and 8)	19462168	02.13.05.00333
Key for electrodes	19462100	02.13.05.00335
12 contact nozzle D 1,0 (40 - 50A), Back Striking	19462195	02.13.05.00338
12 contact nozzle D 1,1 (50 - 60A), Back Striking	19462197	02.13.05.00341
12 contact nozzle D 1,2 (60 - 70A), Back Striking	19462198	02.13.05.00344
13 contact nozzle D 1,4 (80 - 90A), Back Striking	19462199	02.13.05.00347
13 contact nozzle D 1,6 (110 - 120A), Back Striking	19462200	02.13.05.00350
14 Gouging nozzle (100 - 120A), back striking	19462158	02.13.05.00353
15 Protective cap	19462204	02.13.05.00356
16 Protective cap head for contact cutting (40 - 70A)	19462210	02.13.05.00359
17 Protective cap head for contact cutting (80 - 120A)	19462212	02.13.05.00362
18 Protective cap head for gouging	19462214	02.13.05.00365

Plasma Cutting Torches

PT-100 Plasma Cutting Torches

with coaxial cable suitable for AVALON 120



Plasma Cutting Torches

PTM-100 Plasma Cutting Torches

Suitable for AVALON 120

Cutting torch components PTM-100	Item no. old	Item no. new	Typ	PTM-100 with coaxialcable		
1a O-Ring	19462100		Plasma cutting torch	Machine torch, 6 m hose with rubber cover		
1b Cooling tube	19462104					
2 Fibreglas Positions-Pipe	19462108	02.13.05.00305				
3 Plasma elektrode, Back Striking	19460110					
4 Diffusor 30 - 70A	19462120	02.13.05.00311				
5 Diffusor 80 - 100A	19462127	02.13.05.00313				
6 Plasma nozzle, cut, DM 1,0 (40-50A), Back Striking	19462128	02.13.05.00315				
6 Plasma nozzle, cut, DM 1,1 (50-60A), Back Striking	19462151	02.13.05.00319				
6 Plasma nozzle, cut, DM 1,2 (60-70A), Back Striking	19462152	02.13.05.00321				
7 Plasma nozzle, cut, DM 1,4 (80-90A), Back Striking	19462153	02.13.05.00323				
7 Plasma nozzle, cut, DM 1,5 (100A), Back Striking	19462154	02.13.05.00325				
8 Protective cap, 30 - 70A	19462155	02.13.05.00327				
9 Protective cap, 80 - 100A	19462163	02.13.05.00329				
Key for electrodes	19462164	02.13.05.00331				
10 contact nozzle D 1,0 (40 - 50A), Back Striking			Current range	30 - 100 A		
10 contact nozzle D 1,1 (50 - 60A), Back Striking	19462195	02.13.05.00338				
10 contact nozzle D 1,2 (60 - 70A), Back Striking	19462197	02.13.05.00341				
11 contact nozzle D 1,4 (80 - 90A), Back Striking	19462198	02.13.05.00344				
11 contact nozzle D 1,5 (100 - 110A), Back Striking	19462199	02.13.05.00347				
12 Protective cap for contact cut	19462200	02.13.05.00350				
13 Protective cap for contact cut	19462204	02.13.05.00356				
14 Fibreglas Positions-Pipe, with thread	19462203					
					Duty cycle 60%	100 A
			Gas	Air/N2		
			Gas pressure	4,6 - 5,0 bar		
			Gasflow	200 lpm		
			Ignition	without HF*		
			Item no. old, 6 m	19462008		
			Item no. new, 6 m	02.12.04.00106		
			Item no. old, 12 m	19462006		
			Item no. new, 12 m	02.12.04.00112		

*Patented ignition system without contact of the workpiece.

Plasma Cutting Torches

PTM-100 Plasma Cutting Torches

Suitable for AVALON 120

