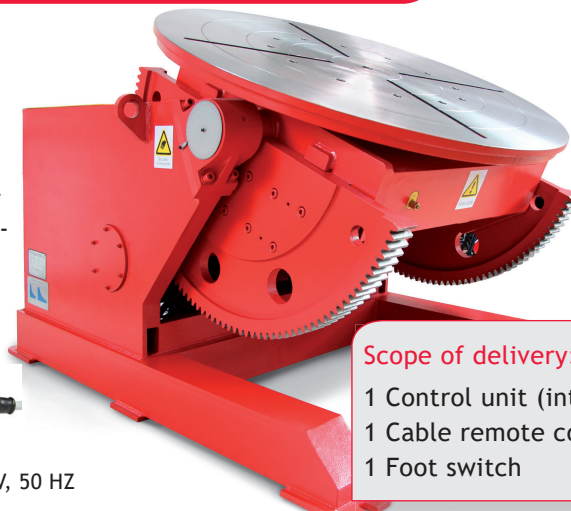


Positioners, heavy-duty

Welding Positioner POS-TW and POS-TS series

For heavy industries

When choosing a turntable, the turning and tilting moment must be considered by all means. The distance between the center of gravity of the workpiece and the faceplate must be considered and the eccentric distance of the center of gravity and the center respectively. Workpieces can be optimally positioned for welding with a turning and tilting table.



Scope of delivery:

- 1 Control unit (integrated)
- 1 Cable remote control
- 1 Foot switch

Features

- Robust design.
- Infinitely variable speed control.
- Hand remote control.
- HF-protected.



All listed positioners have an input voltage of: 3P, 400 V, 50 HZ

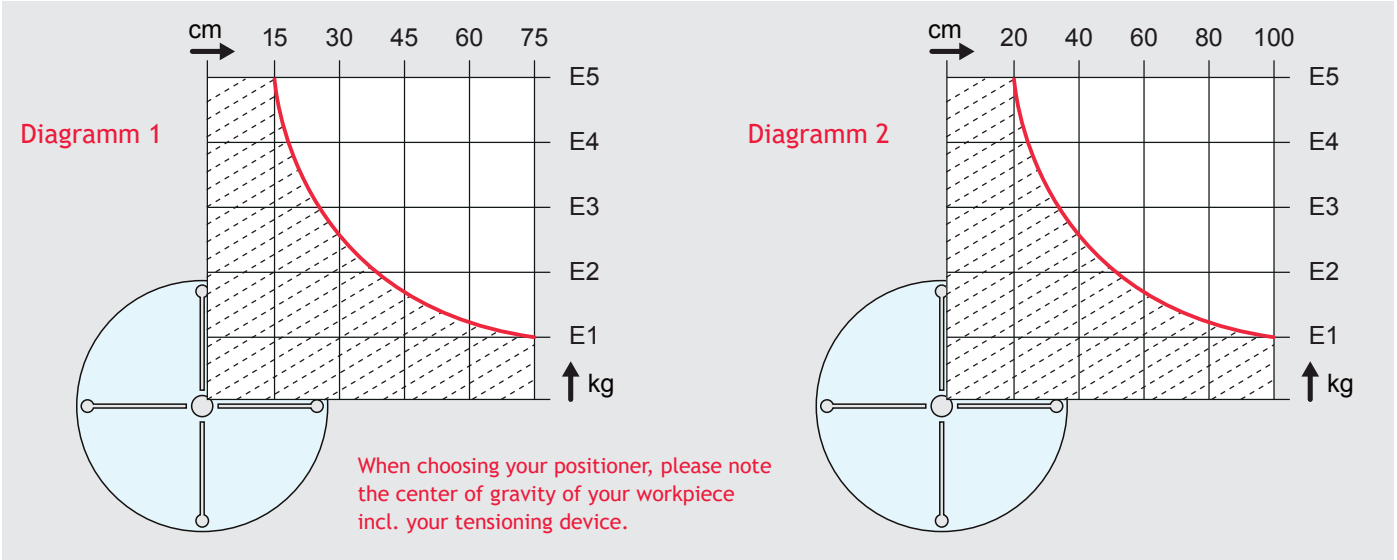
Model	POS-1 TW / POS-1 TS	POS-2 TW / POS-2 TS	POS-3 TW / POS-3 TS	POS-4 TW / POS-4 TS
Max. Load	1 t	2 t	3 t	4 t
Max. rotation torque	2000 Nm	4000 Nm	6000 Nm	8000 Nm
Max. tilt torque	3000 Nm	6000 Nm	9000 Nm	12.000 Nm
Centre of gravity	300 mm	300 mm	300 mm	300 mm
Eccentricity	200 mm	200 mm	200 mm	200 mm
Rotation speed	0,12 – 1,2 u/min	0,1 – 1,0 u/min	0,05 – 0,5 u/min	0,05 – 0,5 u/min
Rotating speed TW-Series	0,05 – 5 u/min (Servo motor)			
Rotating power TS-Series	1,3 KW	1,8 KW	2,9 KW	4,4 KW
Tilt speed	0,35 u/min	0,35 u/min	0,35 u/min	0,35 u/min
Tilt range(°)	0 – 135°	0 – 135°	0 – 130°	0 – 130°
Max turning dia at 90 deg	1350 mm	1630 mm	1750 mm	1850 mm
Mounting hole circle Ø	130 mm - max. 270 mm	140 mm - max. 360	125 mm - max. 470	
Table diameter	900 mm	1100 mm	1300 mm	1300 mm
Measurement (LxWxH) mm	1475 x 1050 x 900	1640 x 1150 x 1000	1800 x 1350 x 1050	1800 x 1350 x 1050
Welding current	500 A	500 A	700 A	700 A
Item no. POS-TW Serie	02.30.02.01012	02.30.02.01020	02.30.02.01032	02.30.02.01040
Item no. POS-TS Serie	02.30.02.02010	02.30.02.02020	02.30.02.02030	02.30.02.02040

Model	POS-5 TW / POS-5 TS	POS-6 TW	POS-8 TW	POS-10 TW
Max. Load	5 t	6 t	8 t	10 t
Max. rotation torque	10.000 Nm	12.000 Nm	16.000 Nm	20.000 Nm
Max. tilt torque	15.000 Nm	18.000 Nm	32.000 Nm	40.000 Nm
Centre of gravity	300 mm	300 mm	400 mm	400 mm
Eccentricity	200 mm	200 mm	200 mm	200 mm
Rotating speed	0,05 – 0,5 u/min	0,05 – 0,5 u/min	0,02 – 0,2 u/min	0,02 – 0,2 u/min
Rotating speed TS-Series	5,5 KW			
Tilt speed	0,2 u/min	0,2 u/min	0,2 u/min	0,2 u/min
Tilt range(°)	0 – 130°	0 – 130°	0 – 130°	0 – 130°
Max turning dia at 90 deg	2000 mm	2180 mm	2300 mm	2500 mm
Mounting hole circle Ø	195 mm - max. 500		240 mm- max. 590	240 mm - max. 690
Table diameter	1500 mm	1600 mm	1800 mm	2000 mm
Measurement (LxWxH) mm	2200x1600x1200	2200x1600x1300	2500x1800x1425	2720x2000x1600
Welding current	700 A	700 A	1000 A	1000 A
Item no. POS-TW Serie	02.30.02.01050	02.30.02.01060	02.30.02.01070	02.30.02.01080
Item no. POS-TS Serie	02.30.02.02050			

Positioners, heavy-duty

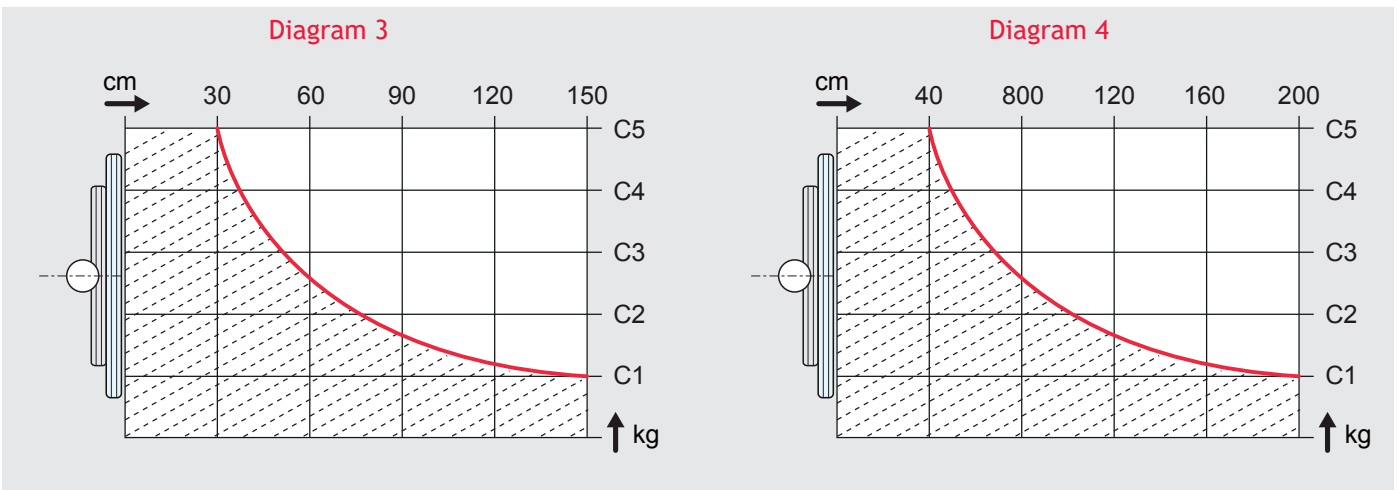
Welding Positioner POS-TW and POS-TS series

Eccentric load (E)



Exzentrisch	POS-1TW	POS-2TW	POS-3TW	POS-4TW	POS-5TW	POS-6TW	POS-8TW	POS-10TW
Diagram 1		Diagram 2						
E1 (in kg)	200	400	600	800	1000	1.200	1.600	2.000
E2 (in kg)	400	800	1.200	1.600	2.000	2.400	3.200	4.000
E3 (in kg)	600	1.200	1.800	2.400	3.000	3.600	4.800	6.000
E4 (in kg)	800	1.600	2.400	3.200	4.000	4.800	6.400	8.000
E5 (in kg)	1.000	2.000	3.000	4.000	5.000	6.000	8.000	10.000

Zentrische Last (C)



Zentrisch	POS-1TW	POS2TW	POS-3TW	POS-4TW	POS-5TW	POS-6TW	POS-8TW	POS-10TW
Diagram 3						Diagram 4		
C1 (in kg)	200	400	600	800	1.000	1.200	1.600	2.000
C2 (in kg)	400	800	1.200	1.600	2.000	2.400	3.200	4.000
C3 (in kg)	600	1.200	1.800	2.400	3.000	3.600	4.800	6.000
C4 (in kg)	800	1.600	2.400	3.200	4.000	4.800	6.400	8.000
C5 (in kg)	1.000	2.000	3.000	4.000	5.000	6.000	8.000	10.000