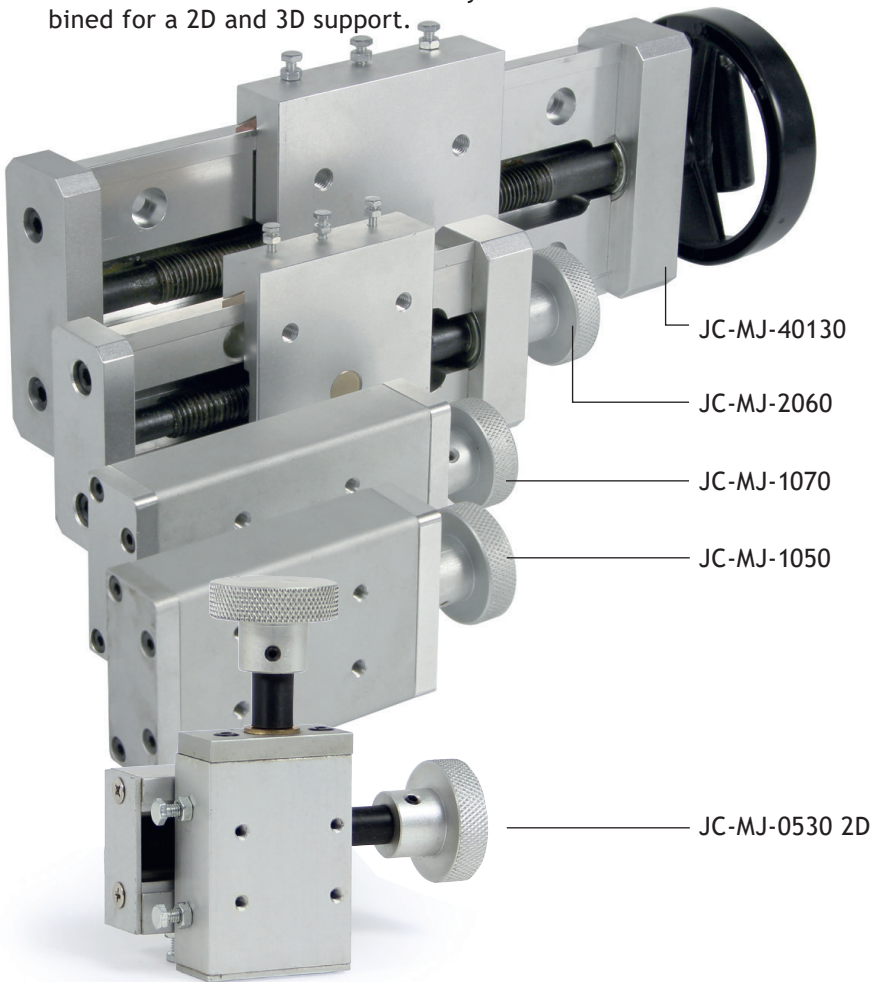


Supports

Manual slides + torch holders

Accurate and flexible

JC-MJ series of precision guidances is designed for a manual fine adjustment of the torch. These are predominantly used with welding tractors and automatic welding devices. Using these precision guidances, you will receive more flexibility, positioning is more accurate and fast. Thus, your product quality will be increased. They are easy to install and comfortably to adjust. All JC-MJ models are made of aluminium alloy and can be combined for a 2D and 3D support.



MJ series can be combined with different torch holders and connections.

Possible for MIG/MAG-, TIG-, Plasma-, SAW- and CNC-cutting torches.



JC-MR 60 rotating element Axis of rotation: 360°; Load: 5 kg

ED-MR90 rotating element Axis of rotation: 360°, Load: 40 kg

| Model | Item no. |
|------------|--------------------------------|
| JC-MR 60 | 02.20.18.00110 (old: 72202408) |
| JC-ED-MR90 | 02.20.18.00114 (old: 72202410) |

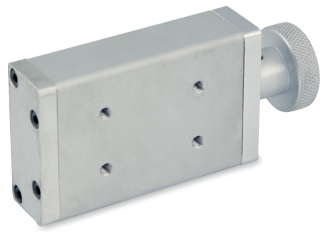


1D, 2D and 3D examples

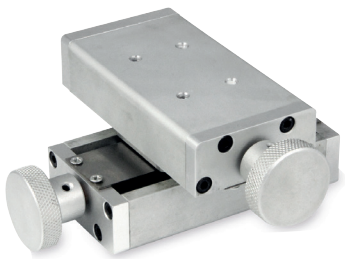
| Model | Item no. | Lift | Load |
|----------------|--------------------------------------|---------|-------|
| JC-MJ-0530 2D | 02.20.16.00032 (old: 72202022) | á 30 mm | 5 kg |
| JC-MJ-1050 1D | 02.20.16.00050 (old: 72202030) | 50 mm | 10 kg |
| JC-MJ-1050 2D | 02.20.16.00052 (old: 72202032) | á 50 mm | 10 kg |
| JC-MJ-1050 3D | 02.20.16.00054 (old: 72202034) | á 50 mm | 10 kg |
| JC-MJ-1070 1D | 02.20.16.00070 (old: 72202050) | 70 mm | 10 kg |
| JC-MJ-1070 2D | 02.20.16.00072 (old: 72202052) | á 70 mm | 10 kg |
| JC-MJ-1070 3D | 02.20.16.00074 (old: 72202054) | á 70 mm | 10 kg |
| JC-MJ-2060 1D | 02.20.16.00260 (old: 72202060) | 60 mm | 20 kg |
| JC-MJ-2060 2D | 2x 02.20.16.00260 (old: 2x 72202060) | á 60 mm | 20 kg |
| JC-MJ-40130 1D | 02.20.16.04130 (old: 72202130) | 130 mm | 40 kg |

Supports

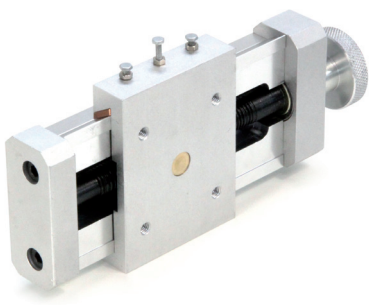
Manual slides + torch holders



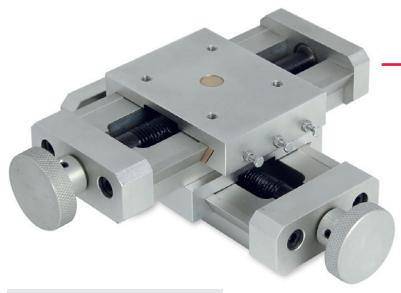
JC-MJ1050 1D/JC-MJ1070 1D



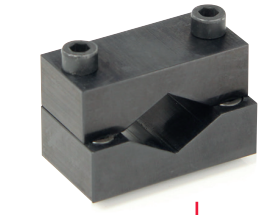
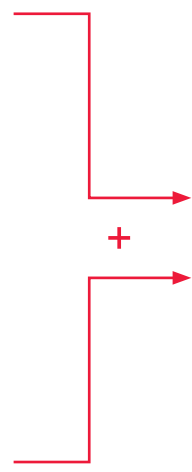
JC-MJ1050 2D/JC-MJ1070 2D



JC-MJ2060 1D



JC-MJ2060 2D



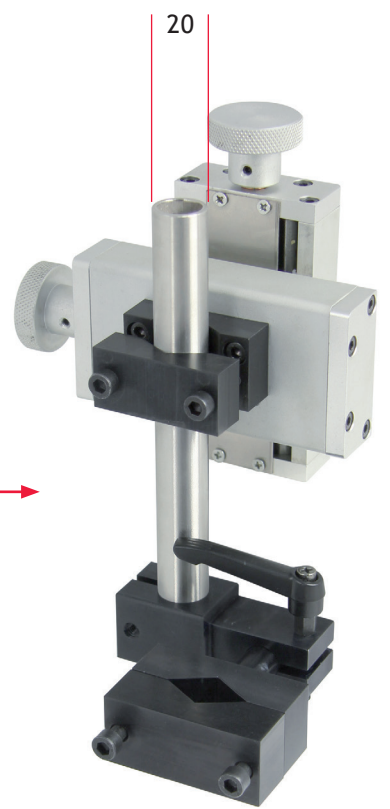
TC-H small*



TC-2R



TC-H Large**



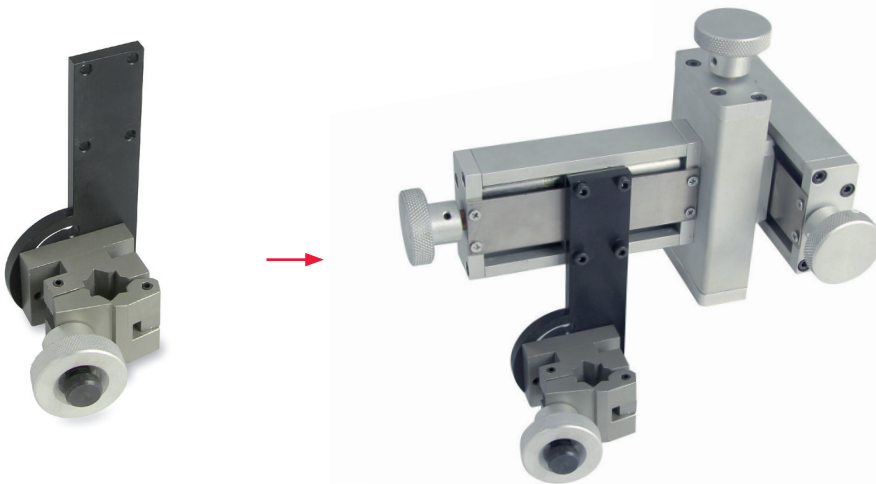
Pipe model TC-P

| Model | Item no. | Pipe diameter Ø |
|------------|--------------------------------|-----------------|
| TC-H small | 02.20.08.00114 (old: 72202210) | 17 - 20 mm |
| TC-H large | 02.20.08.00118 (old: 72202212) | 17 - 30 mm |
| TC-2R | 02.20.08.00122 (old: 72202215) | 20 mm |
| TC-P | 02.20.08.00026 (old: 72202220) | 20 mm |

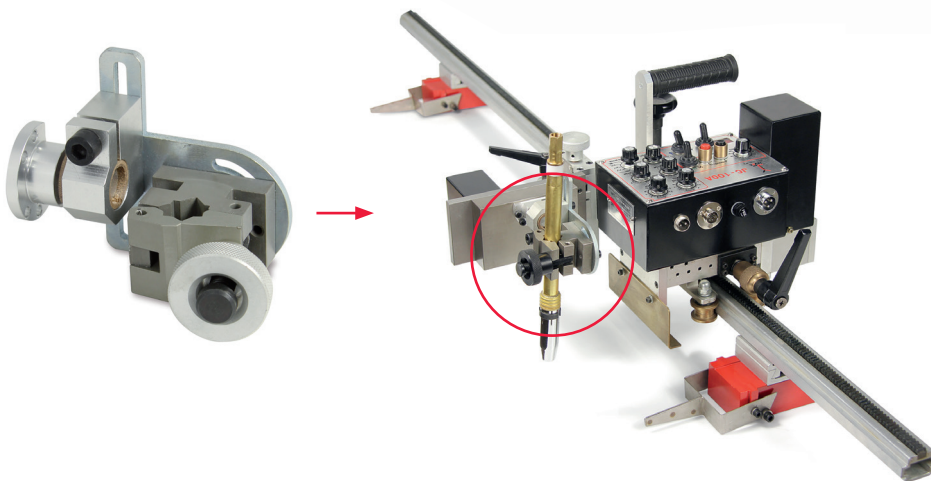
* for model range JC-MC1050
 ** for model ranges JC-MC1070, JC-MC2060 and JC-MC40130

Supports

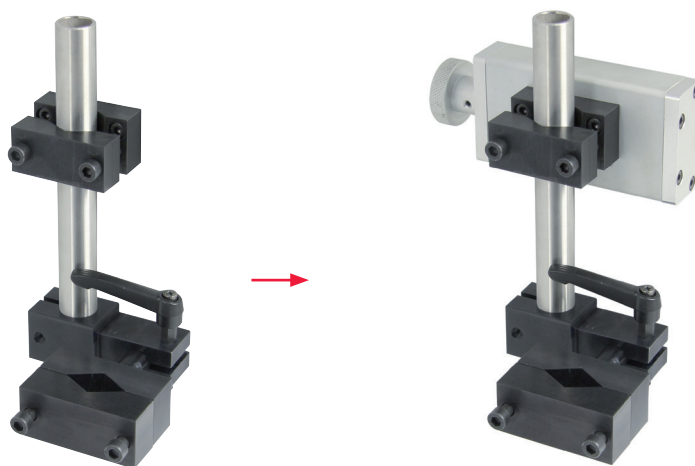
Manual slides + torch holders



Clamp mounting Type 2
example of use with
ED-MJ1050 3D



Clamp mounting Type 3
example of use on
MIG-Traktor mounted

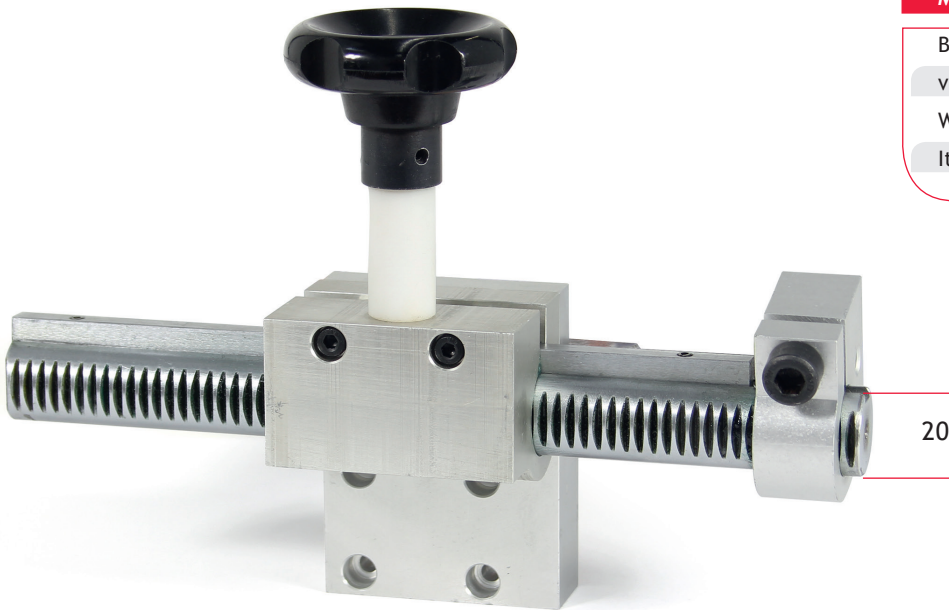


Clamp mounting Type 4
example of use with
ED-MJ1050 1D

| Model | Item no. | Pipe diameter Ø |
|-----------------------|--------------------------------|-----------------|
| Clamp mounting Type 2 | 02.20.08.00020 (old: 72202042) | 17 - 20 mm |
| Clamp mounting Type 3 | 02.20.08.00030 (old: 72202044) | 17 - 20 mm |
| Clamp mounting Type 3 | 02.20.08.00040 (old: 72202046) | 17 - 20 mm |

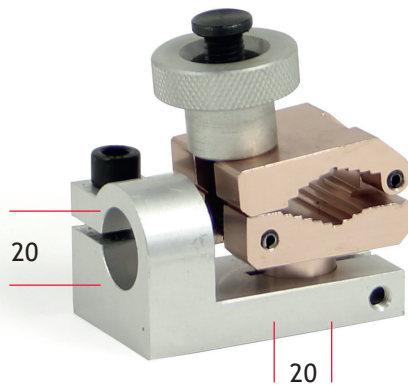
Supports

Manual slides + torch holders

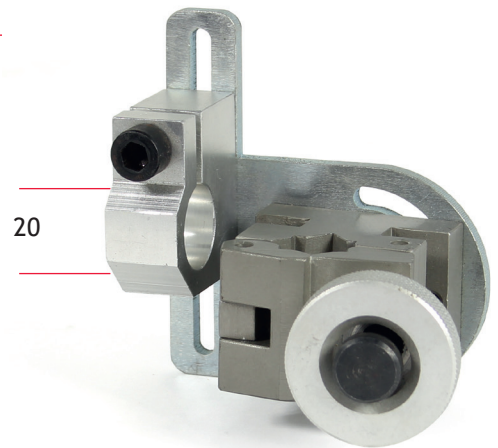


RAC 120

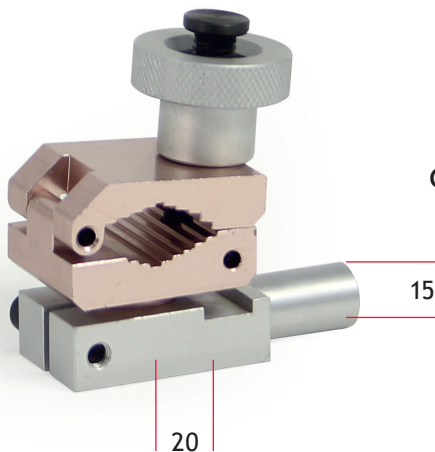
| Model | RAC 120 |
|-------------------|----------|
| Bar Ø | 20 mm |
| vertical movement | 120 mm |
| Weight | 1 kg |
| Item no. | 72202250 |



Clamp mounting Type 5



Clamp mounting Type 3
also fitting for RAC 120



Clamp mounting Type 6

| Model | Clamp mounting Type 5 |
|---------------|--------------------------------|
| Pipe uptake Ø | 20 mm |
| Pin Ø | 15 mm |
| Item no. | 02.20.08.00050 (old: 72202047) |

| Model | Clamp mounting Type 6 |
|---------------|--------------------------------|
| Pipe uptake Ø | 20 mm |
| Item no. | 02.20.08.00060 (old: 72202048) |