

Support Block

Hydraulic Manual Lift Support 3000 kg Load

HML 3

Features

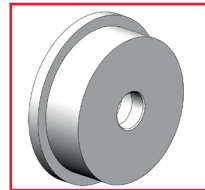
- HML is designed as a suitable solution to qualified and proper circumferential welding of cylindrical parts according to diameter settings at suitable certain capacities..
- HML Adjustable diameter Hydraulic Manual Lift minimizes the usage of Crane.
- By easier usage provides saving of time.
- In Pipe welding production , it has an irreplaceable design in centering between Head and Tailstock distances it has an irreplaceable design.
- Although HML is constituted of single idler unit, If easy movement over a rail arrangement by means of a manual buggy system is requested, by increasing the number of HML, we can easily provide positioning to more longer parts.
- HML is produced as standard 3000kg. According to special diameter & load range, we present special customer design production.



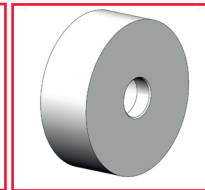
OR code for more Information

PRICE ONLY ON REQUEST!

Optional



1x Kit rail wheel



1x Kit Ground wheels

Model	Symb.	HML-3
Load Capacity		3000 kg
Min. - Max. Diameter Ø	ØD min-ØD max	50 - 1070 mm
Height	H1-H2	1070 - 1500
Rail Axis	(ØD max - 2 at H2)	1800 mm
Width	E	770 mm
Length	A	900 mm
Weight	B	670 kg

