

Pipe Processing Unit

GK-200 and GK-400

Features

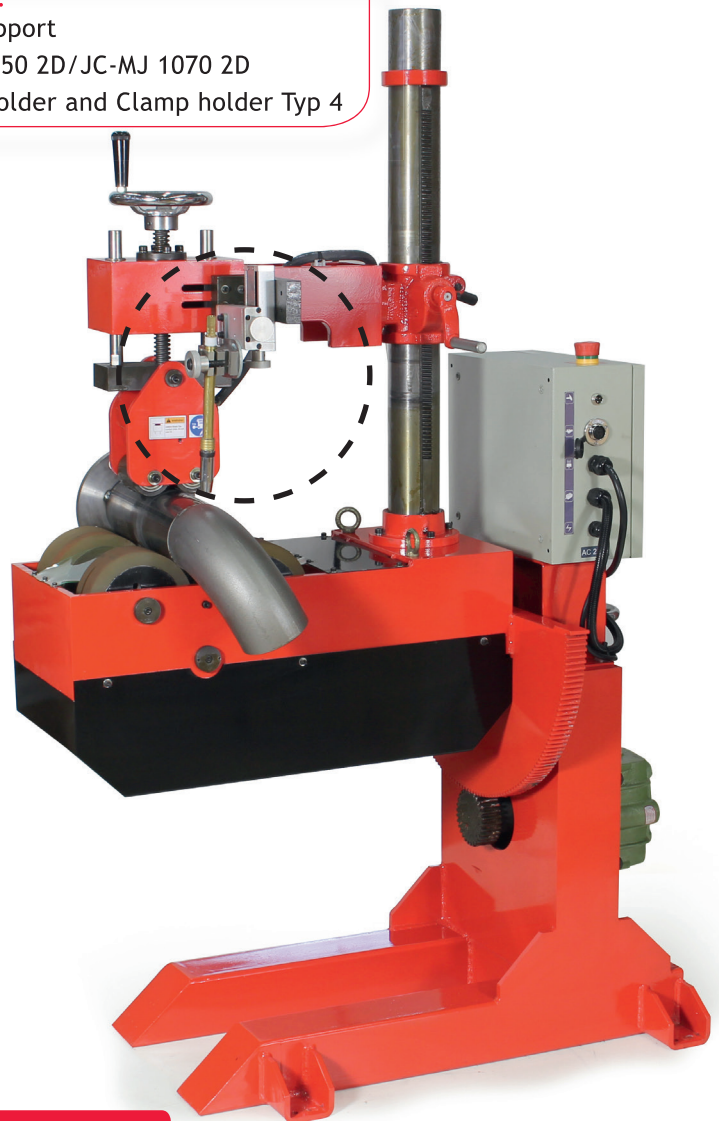
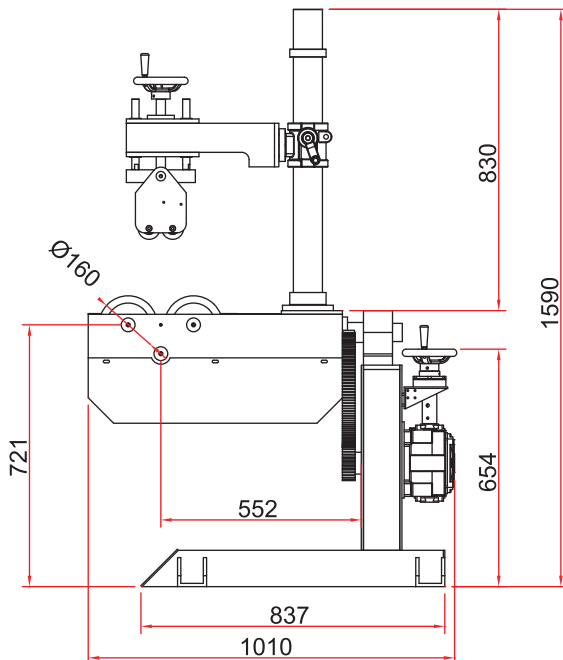
- Stable and compact construction.
- Welding, cutting and grinding possible.
- Clamping of a multitude of pipes. Also suitable for tube bends and pipes with flange.
- Fast and precise clamping without jaw chucks.

Optional:

Cross Support

JC-MJ 1050 2D/JC-MJ 1070 2D

+ Torchholder and Clamp holder Typ 4



Model	GK-200	GK-400
Supply voltage	AC 230 V/50 Hz	3-phasig AC 380 V/50 Hz
Max. Load	200 kg	800 kg
Workpiece diameter	60 - 300 mm	60 - 400 mm
Workpiece length	over 400 mm	over 480 mm
Speed	190 - 1900 mm/min.	120 - 1200 mm/min.
Torque	109.8 Nm	600 Nm
Tilting moment	1,516.0 Nm	1,880 Nm
Tilting range	+ / - 80°	+ / - 45°
Tilting centre height	720 mm	820 mm
Speed adjustment	Inverter	
Power	100 W	DC 400 W
Size (LxBxH) mm	1010x646x1590	
Weight		
Item no.	02.30.20.00100	

Scope of delivery:

- 1 Control (integrated)
- 1 Cable remote control

