

# ECO-S Line Positioners

## Welding Positioner Eco-S300

### Features

- Tilting range up to 90° manually infinitely adjustable via crank handle
- Foot switch Start/Stop.
- Switch for cw/ccw turning.
- Rotationtime adjustable.
- The turntable speed is adjustable from 0,2 to 2,5 U/min.
- Controlling of the welding machine by integ. control system
- 350A ground connection

up to  
**300 kg**

with  
90 mm  
hollow shaft



Model	ECO S300
Supply voltage	1PH/230 V - 50/60 Hz DC PCB
Rotation motor	200 W
hollow shaft ø	90 mm
Tilting range	0° - 90°
Worktable diameter	500 mm
Rotation speed	0,2 - 2,5 rpm
Torque	200 Nm
Mounting hole circle Ø	110 - 413 mm
Max. horizontal load	300 kg
Max. vertical load	100 kg
Tilting methode	manual
horizontal height	650 mm
Center height of tilt	445 mm
Weight	90 kg
Item no.	02.30.01.00065

### Scope of delivery:

- 1 control system (integ.)
- 1 Foot switch

# ECO-S Line Positioners

## Welding Positioner ECO-S300

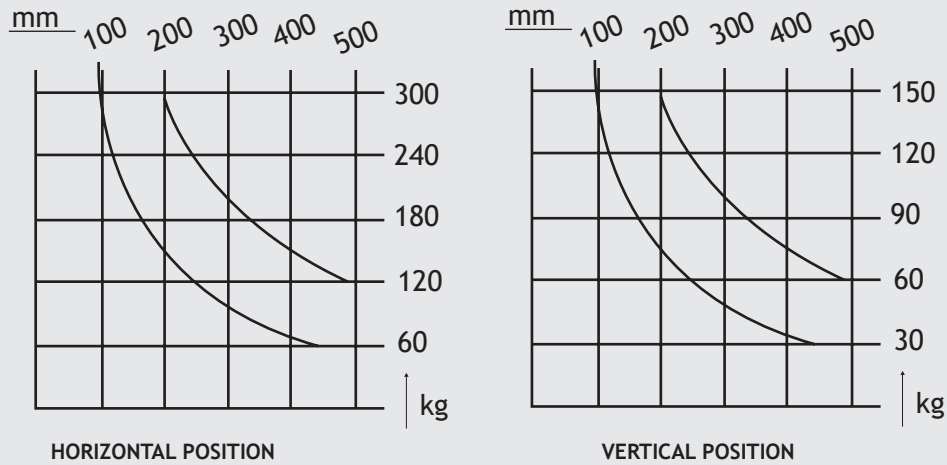
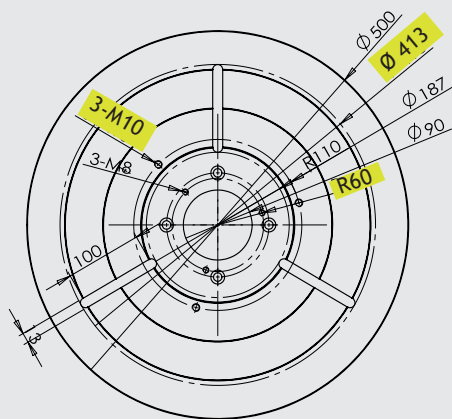


Diagram: ECO S300

When choosing your positioner, please consider:

- the center of gravity of your workpiece
- the weight of your tensioning device(chuck)



Turntable plate ECO S300

### Note

Suitable quick action chuck for ECO-S300  
 Chuck 200JW, Chuck 300JW and Chuck 400 JW

Page: 128

Chuck 400 JW  
 Item no.: 02.20.10.01040  
 (old:919191116)

