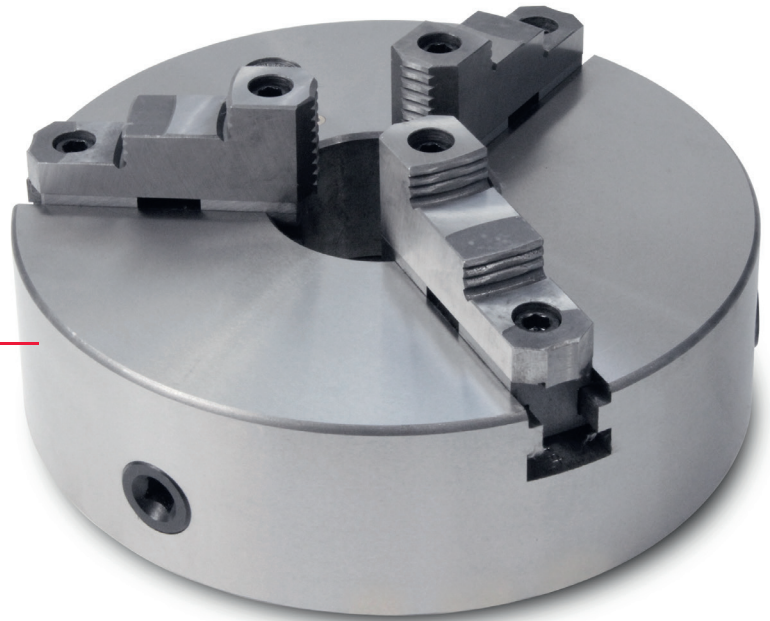


# Chucks

## Three-jaw Chuck for Turntables

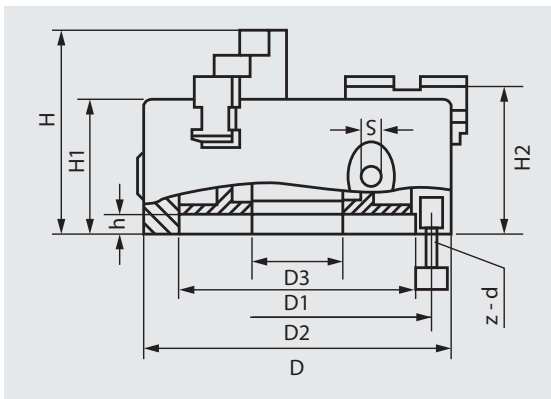
### Precisely fitting

We offer a multitude of different chucks for chuck tensioning, above all on welding turntables. Every workpiece diameter from 2 mm up to 1530 mm can be fixed. In addition to our "Chuck series" we now have "Chuck 500" in our product range for the excellent positioning of very heavy workpieces.



### Features

- Universally applicable.
- Self-retaining tension.
- Extra set of soft chuck jaws which can be finished for increased fitting accuracy.



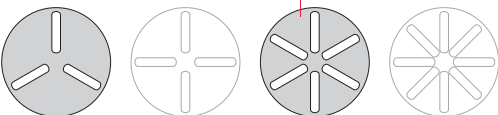
Chuck 325-D

### Scope of delivery:

- 1 Three-jaw chuck
- 1 Set of external jaws
- 1 Wrench

Size (D)	D1	D2	D3	H	H1	H2	h	S	z - d	Max. load	Weight	suitable for
Chuck 160-D	130	142	40	95	65	-	5	10	3 - M8	160 Nm	8,8 kg	PRO 08, PRO 1, PRO 2, PRO 3
Chuck 200-D	165	180	65	109	75	-	5	12	3 - M10	250 Nm	15,5 kg	PRO 08, PRO 1, PRO 2, PRO 3
Chuck 325-D	272	296	100	154,5	96	102,5	12	13	3 - M16	400 Nm	44 kg	PRO 4
Chuck 500-D	440	465	210	184	115	-	6	17	6 - M16	630 Nm	124 kg	POS 750

Modell	Chuck 160-D	Chuck 200-D	Chuck 325-D	Chuck 500-D
Drilling	40 mm	65 mm	100 mm	210 mm
Inner tensioning range	3 – 145	4 – 200	11,5 – 340	25 – 500
Outer tensioning range	50 – 160	65 – 200	95 – 350	150 – 500
Mounting hole circle	142 mm	180 mm	296 mm	465 mm
Torque	160 Nm	250 Nm	400 Nm	630 Nm
Clamping force	24 kN	31 kN	46 kN	64 kN
Fixture	3-M10	3-M10	3-M16	6-M16
Item no.	02.20.10.00010 (old: 91919008)	02.20.10.00020 (old: 91919012)	02.20.10.00030 (old: 91919016)	02.20.10.00050 (old: 91919024)



The jaw chuck of this series fit without modifications to the JAVAC rotary tables with three and six grooves.