

Profi-Line Plasma

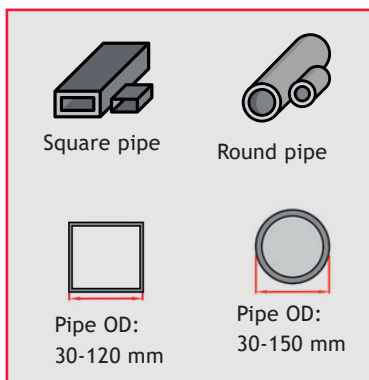
CNC Plasma Tube Machine

Pipe- and Square-CNC-Pipe Cutting Machine CNC Tube S3

Our pipe- and square-CNC-pipe cutting machine processes square 120 x 120 mm as well as round pipes (from Ø30 mm to Ø150 mm) and is equipped with self patented square pipe chuck.

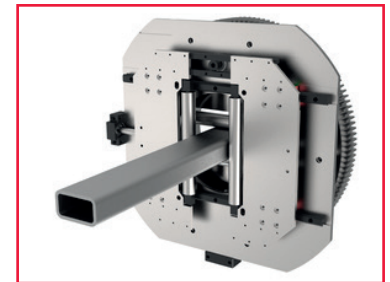
Features

- Panasonic drives 400w x 5
- FFL 4 axis control system
- Self patented square pipe chuck
- Two chucks clamping structure.

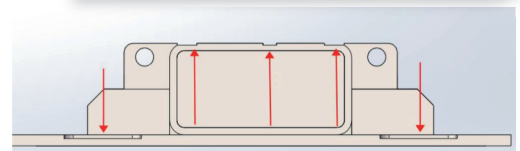


Fully machined rail and rack positioning, Machine mechanism precision smaller than 0.02mm to promise cutting precision.

Modell	Tube S3
Supply voltage	AC220V / 50/60HZ / single-phase
Input Power	2800W
Cutting Speed	depending on material thickness and power source
Moving Speed	0-8000mm/min.
Rotational Speed	60 RPM
Axis	5-axis
Pipe size (round pipe)	Ø 30 mm to Ø 150mm
Pipe size (square pipe)	120 mm x 120 mm
Pipe length	3000 mm (can be customized 6000 mm)
Cutting precision	≤±0,05 to 1 mm
Tolerance	≤±0,2



incl. Software
- Software: FL-TubeMaster



*Axis: 5 axis, one axis for feeding, one axis for horizontal moving, one axis for lifting torch, 2 axis for rotation.

Note: need two axis for pipe rotation because when cutting small pipes, if one rotation axis, that may twist pipe.

